

2018 ANNUAL REPORT

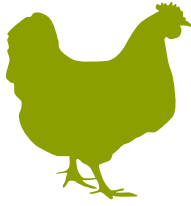
FISCAL YEAR: JULY 2017 - JUNE 2018

*Farm to
Institution*
NEW ENGLAND



We're a six-state network of non-profit, public and private entities working to mobilize the power of New England institutions to transform our food system.

www.farmtoinst.org



FINE Network Advisory Council

Sue AnderBois
State of Rhode Island

Ramón Borges-Méndez
Clark University

Andy Cox
Smith College

Laura Edwards-Orr
Red Tomato

Willie Frazier
*Connecticut Children's
Medical Center*

Shelley Goraj
MaineGeneral

Christopher Howland
*University of
Massachusetts Amherst*

Josh Marshall
New Hampshire Farm Bureau

Monica Nakielski
*Blue Cross Blue Shield
of Massachusetts*

Jennifer Obadia
Health Care Without Harm

Renee Page
*Healthy Communities of the Capital
Area / Maine Farm to Institution*

Margaret Read
Independent Consultant

Sarah Redfield
Lakeside Family Farm

Annie Rowell,
Vermont First at Sodexo

Jesse Rye
Farm Fresh Rhode Island

Sue Small
Retired from Aramark

Brett Tolley
Northwest Atlantic Marine Alliance

John Turenne
Chartwells / Compass Group

Dear FINE Friends,

I am excited to share FINE's fiscal year 2018 annual report with you! In many ways, this report is a celebration and recognition of the partner organizations, institutions, businesses, and agencies that we have the pleasure to serve and collaborate with every day. We are grateful for and impressed by the innovation, passion, and grit of these leaders who are working to transform our food system by mobilizing the power of institutions – each in their own way.

As you will see, 2018 was a year of great growth and transition for FINE. We added new staff and advisory council members and launched a policy initiative as well as a campus farm working group, while deepening our focus on the college and university sector, supporting farm to school and health care programs, and exploring our role with prison garden and foodservice operations. We continue to strengthen our role as a backbone organization for the network of farm to institution leaders in the non-profit, public, and private sectors around New England by organizing events, conducting research, creating tools, and fostering communication.

At the end of the day, our success comes from helping our partners go farther faster by sharing lessons and learning from each other's successes and challenges. In these times of great consolidation in the marketplace, thin margins, uncertain policy signals, and looming environmental concerns, we know that we are all better working together. Join us in appreciating the growing network of farm to institution stakeholders in New England!

Sincerely,




Peter Allison
Executive Director
Farm to Institution New England

*P.S. I hope to see you
at the 2019 New England
Farm to Institution Summit
on April 2-4 at Umass
Amherst!*

on behalf of the staff:

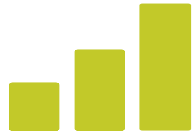
Laura Gallagher, *Research Associate*
Kaitlin Haskins, *Communications Manager*
Amanda Landry, *Communications Associate*
Hannah Leighton, *Research & Evaluation Manager*
Erica Morrell, *Policy Fellow*
Dana Stevens, *Event & Project Manager*
Tania Taranovski, *Director of Programs*

With thanks to our additional FY2018 team members:

Emily Barbour, *Summer 2018 Research Intern*
Sarah Lott, *Summer 2017 Evaluation & Tracking Research Intern*
Kathleen Nay, *Summer 2017 Communications Intern*
Nessa Richman, *Research & Evaluation Director*
Mike Zastoupil, *Farm & Sea to Campus Interim Coordinator*

Key Accomplishments

Here are a few of the ways we've made a positive impact on the world this past year:



Empowered people to measure our collective impact by offering a robust metrics dashboard (dashboard.farmtoinstitution.org) and a new campus dining survey through FINE's nationally-recognized metrics initiative. We also scaled our regional efforts by coordinating the National Farm to Institution Metrics Collaborative.



Increased opportunities for state policy action in support of farm to institution by identifying key policy successes, failures, and engagement options. FINE's new food policy initiative is guided by a group of experienced advocates, agency staff, and supply chain businesses from all six states and beyond.



Built a vibrant network of campus farmers and supporters through the first New England Campus Farmer Summit, which attracted 135 attendees from 30 colleges. This event prompted a new working group that continues to grow the community's reach and impact via events, networking, and best practice sharing.



Created institutional change toward making local and sustainable food the "new normal" by delivering specialized food systems assessment, on-campus coalition building, and technical assistance to a cohort of New England colleges through FINE's Campus FoodShift pilot program.

**FISCAL YEAR 2018
BY THE NUMBERS**
Growing our Network



July 2017 to
June 2018

16,800

People visited
FINE websites
Main website; summit website;
and metrics dashboard

500

People tuned
into our four
webinars

10%

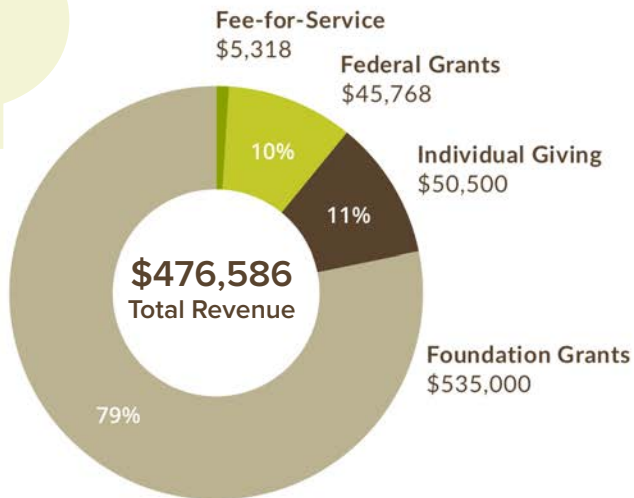
Growth in
newsletter
subscribers

19%

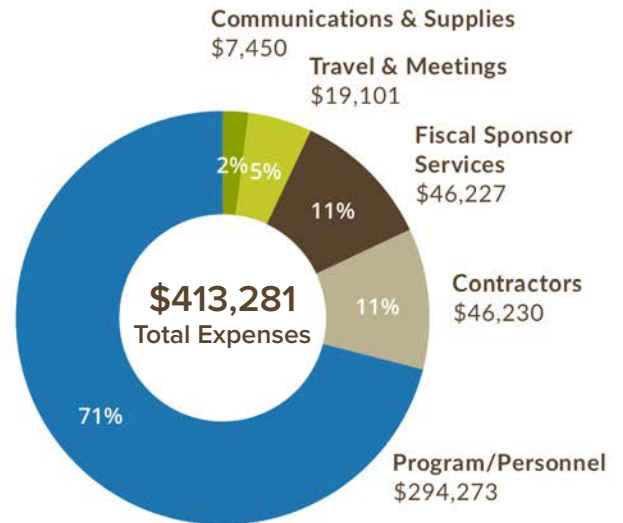
Growth in
social media
followers
Avg. Facebook, Twitter

Financial Snapshot

Fiscal Year 2018 Revenue



Fiscal Year 2018 Expenses



At FINE, we're grateful to everyone who supports our work to build a resilient local food system that benefits farms and communities across New England.

Major Funders

The John Merck Fund
Henry P. Kendall Foundation
The Whitehead Foundation
Anonymous and individual gifts
USDA Local Food Procurement Program
Vermont Community Foundation

"The FINE network was an invaluable resource for advice and sharing on program design and budget management and systems set up. Our local food program now is up and running and serving healthier local meals to our students everyday."

– Gretchen Czaja, Woodstock Elementary School Food Program Director

Join the FINE Community!

Donate Today

You can make a secure gift online at www.farmtoinst.org/act#donate

-OR- mail a check to FINE at the address below

Get Connected

To sign up for The FINE Print, visit www.farmtoinst.org/newsletter

Find us on social media @Farm2Inst



< To learn more about how you can support FINE's work, email Peter Allison at peter@farmtoinst.org >